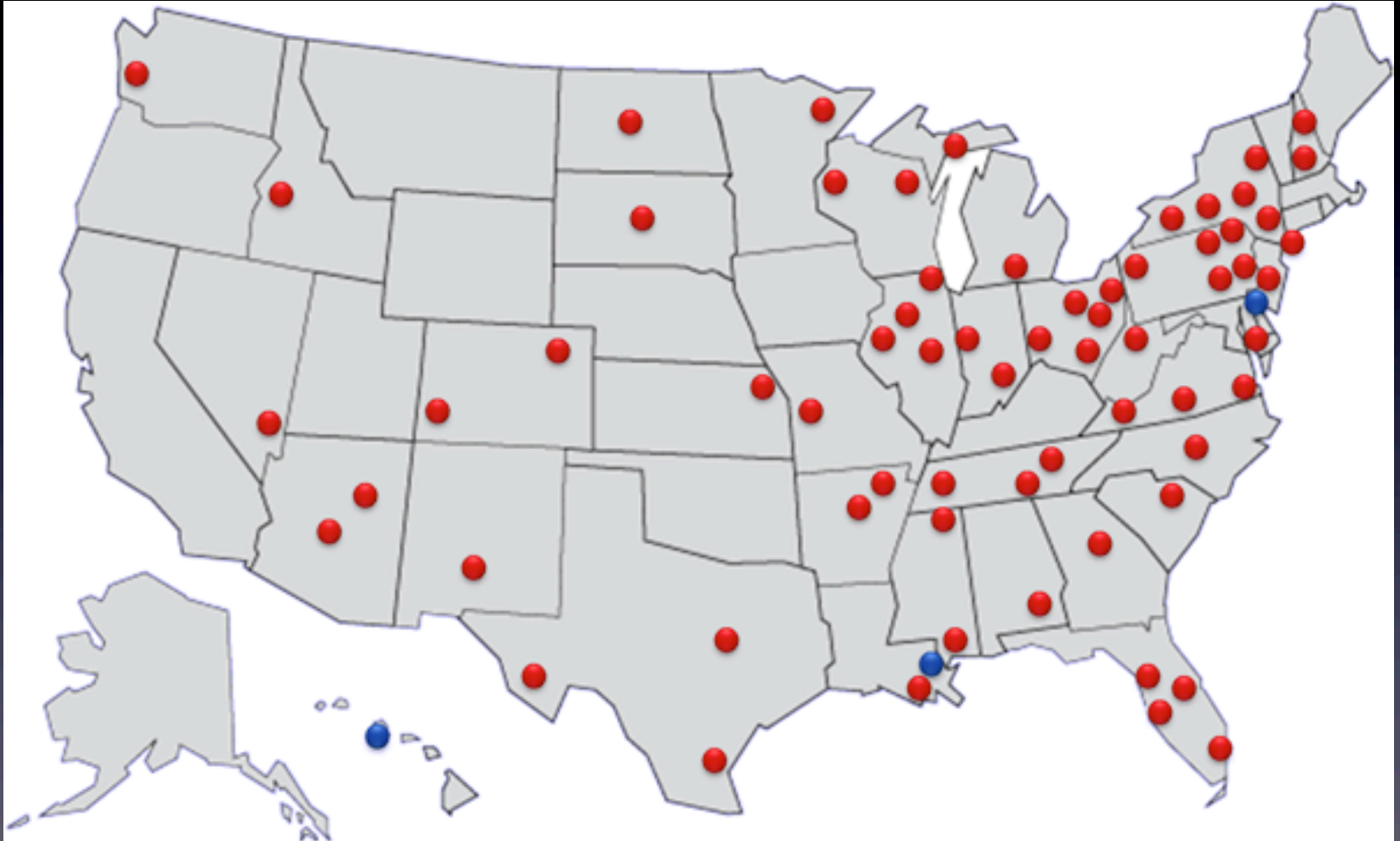


• Simple Location Map - Atlas

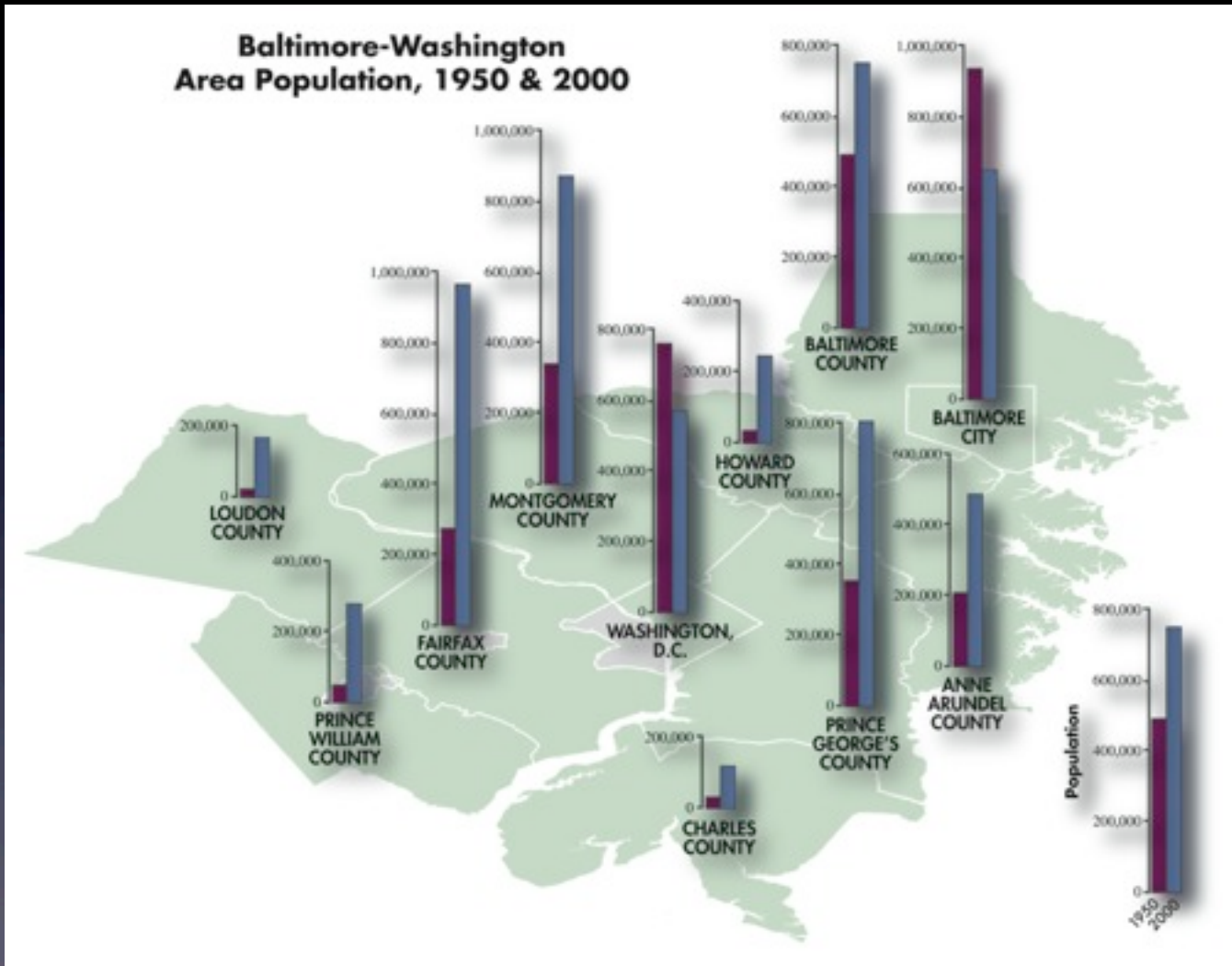


Simple Point Symbol Map (Dot)

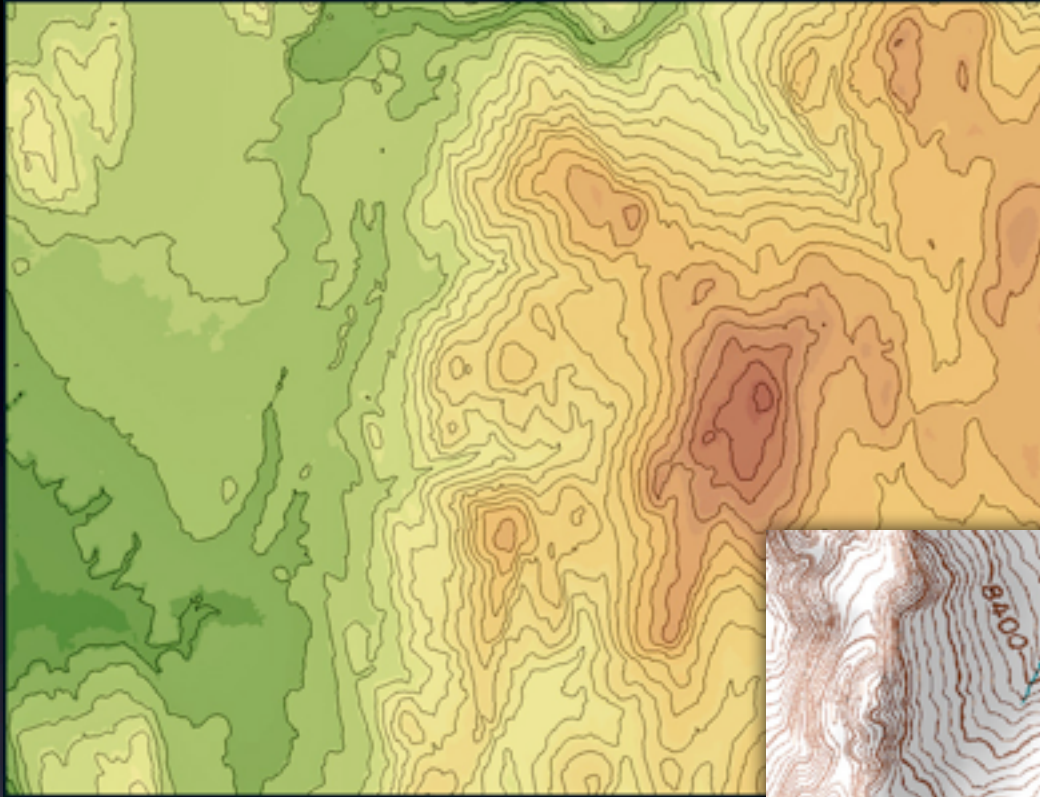


(house seats picked-up by the GOP in 2010 election)

Bar Graph



Isolines - Elevation Contours

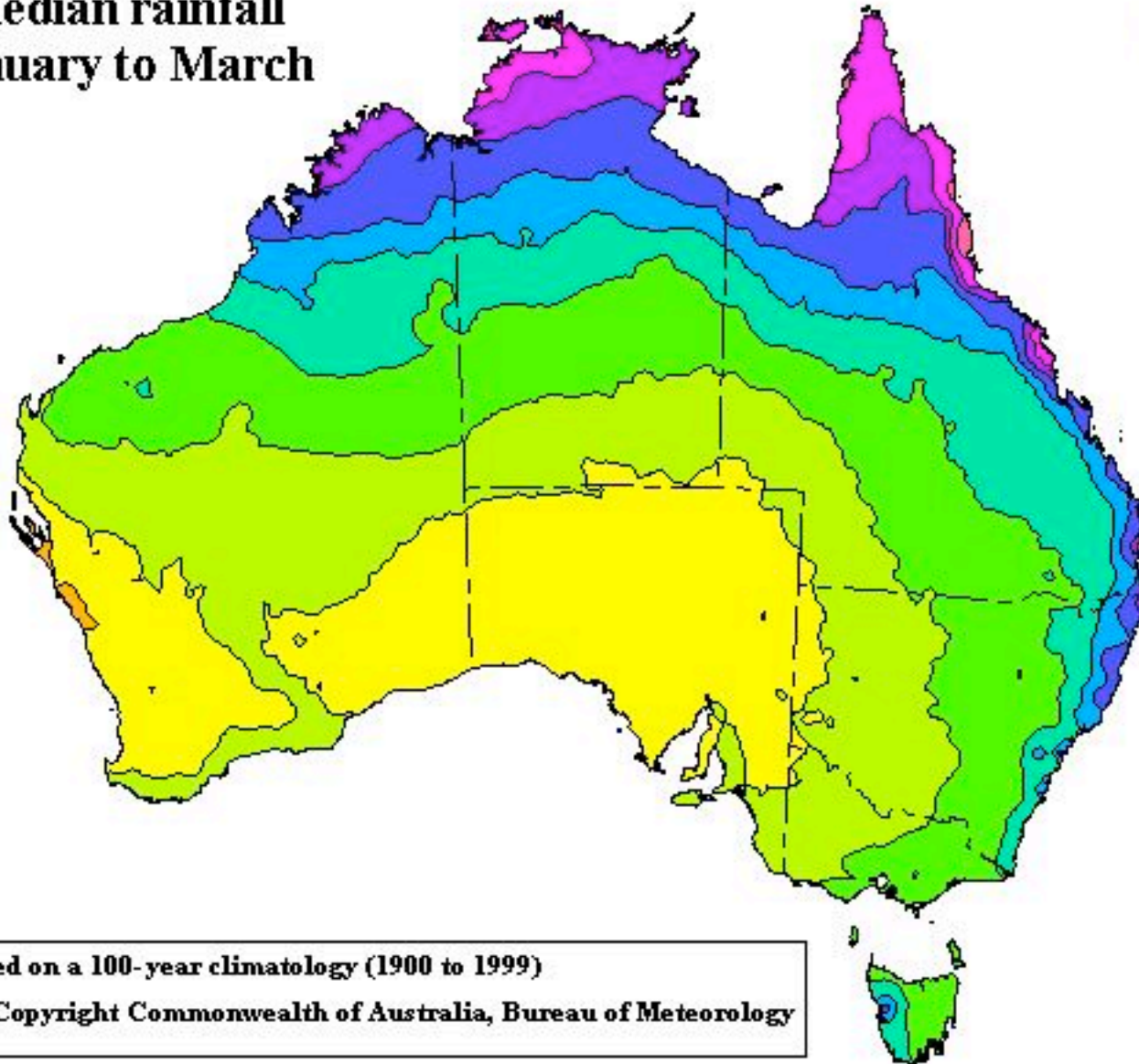


Isolines - Isohyets

Median rainfall
January to March



**BUREAU OF
METEOROLOGY**



Based on a 100-year climatology (1900 to 1999)

© Copyright Commonwealth of Australia, Bureau of Meteorology

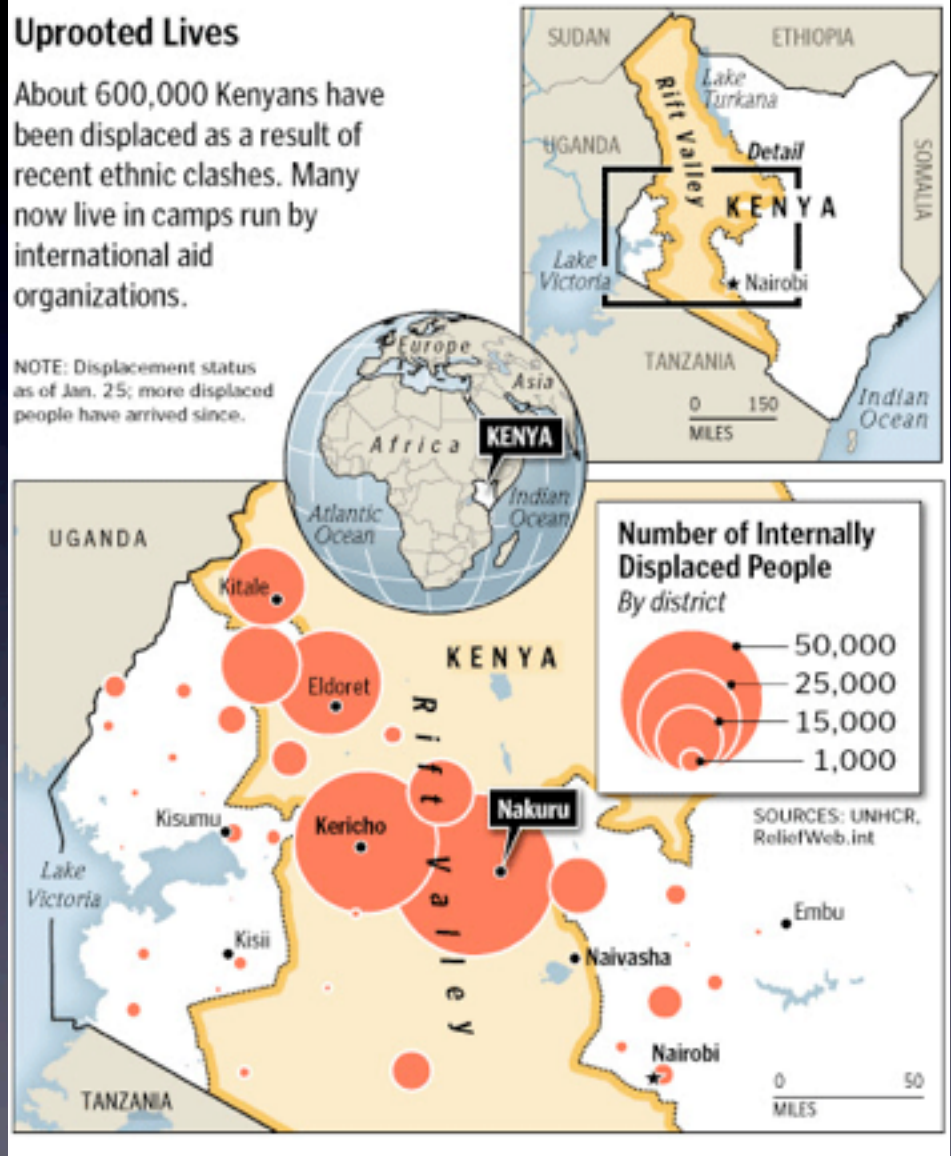
Graduated Symbol / Proportional Circle Map



Uprooted Lives

About 600,000 Kenyans have been displaced as a result of recent ethnic clashes. Many now live in camps run by international aid organizations.

NOTE: Displacement status as of Jan. 25; more displaced people have arrived since.



Direction



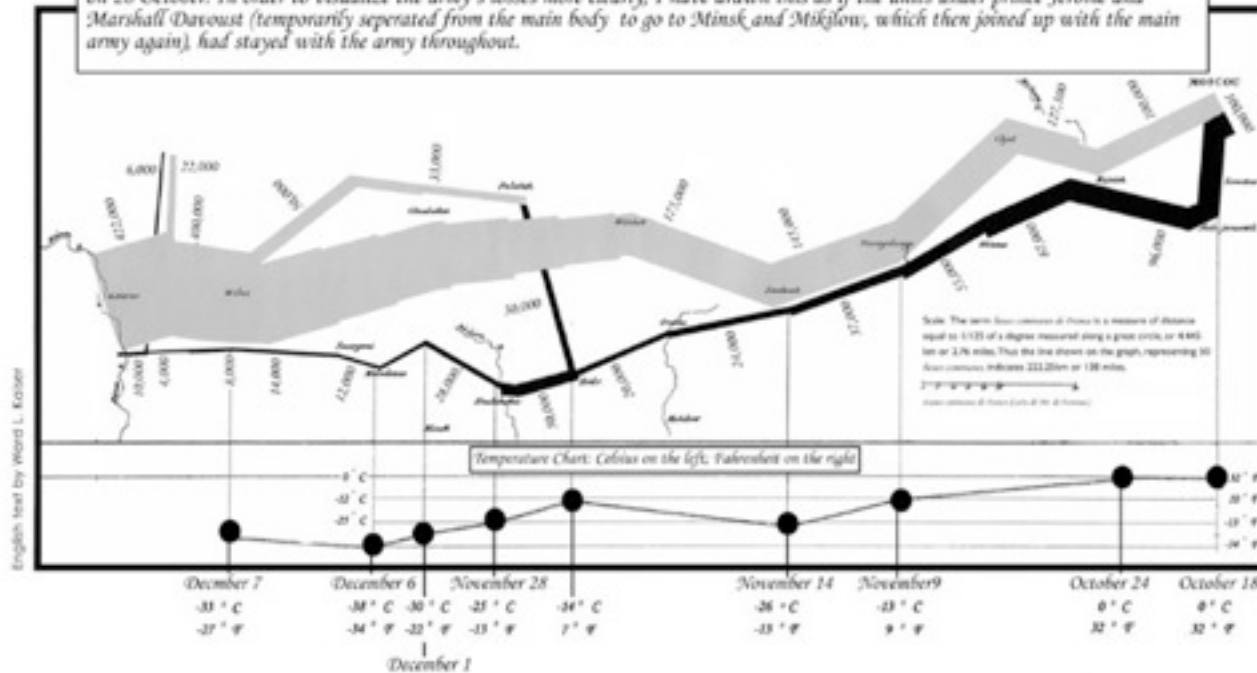
Flow Map w/ Volume



Flow w/ Volume (graphical form)

Map representing the losses over time of French army troops during the Russian campaign, 1812-1813.
 Constructed by Charles Joseph Minard, Inspector General of Public Works retired.
 Paris, 20 November 1869

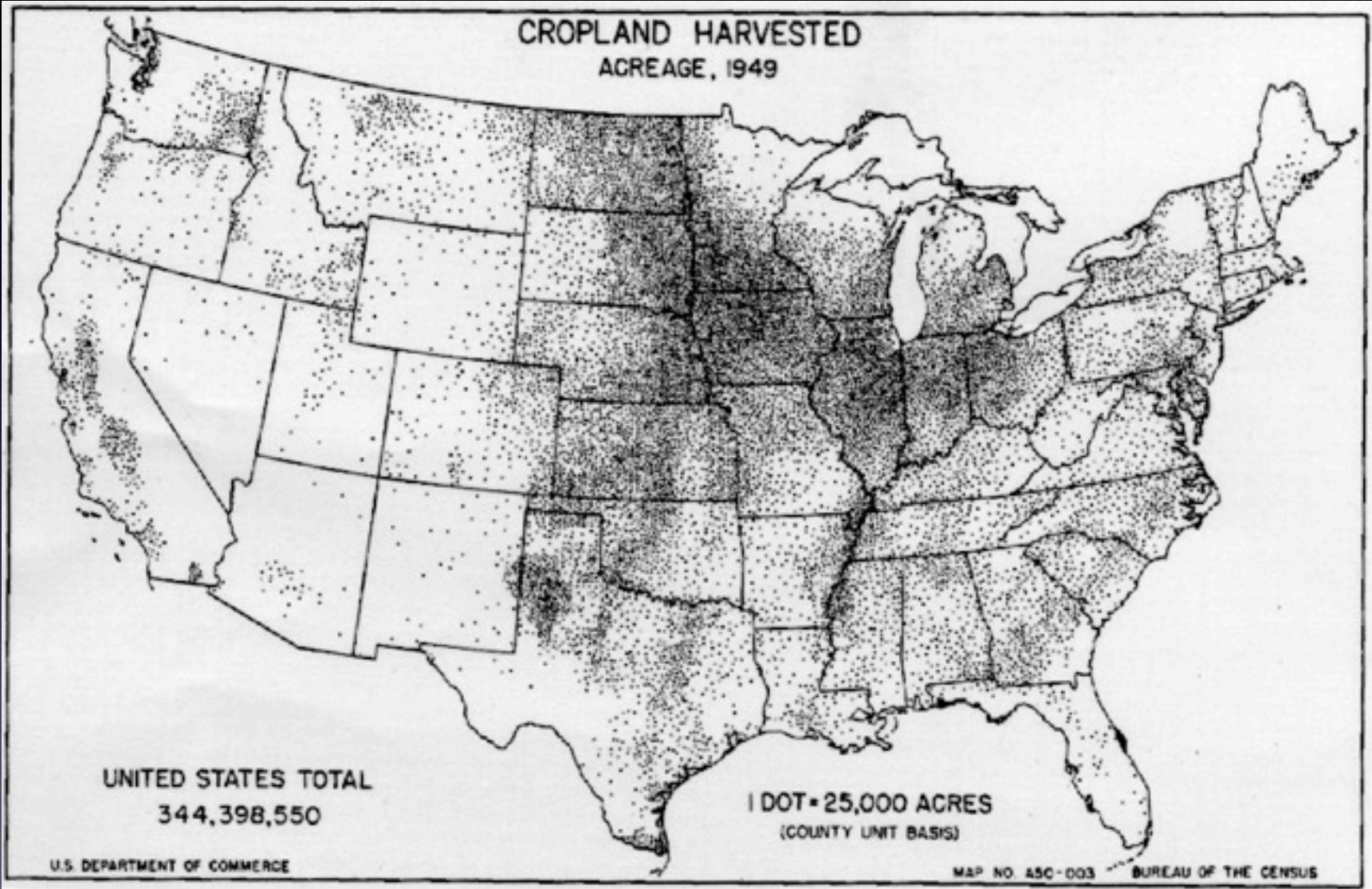
The number of men present at any given time is represented by the width of the grey line; one mm. indicates ten thousand men. Figures are also written besides the lines. Grey designates men moving into Russia; black, for those leaving. Sources for the data are the works of messrs. Thiers, Segur, Fezensac, Chambray and the unpublished diary of Jacob, who became an Army Pharmacist on 28 October. In order to visualize the army's losses more clearly, I have drawn this as if the units under prince Jerome and Marshall Davoust (temporarily separated from the main body to go to Minsk and Msklow, which then joined up with the main army again), had stayed with the army throughout.



Editor's note: dates & temperatures are only referenced for the retreat from Moscow
 © 2001, ODT Inc. All rights reserved.

Figure 58. Minard's map of Napoleon's Russian campaign.
 This graphic has been translated from French to English and modified to most effectively display the temperature data.

Dot Density



Dot Density

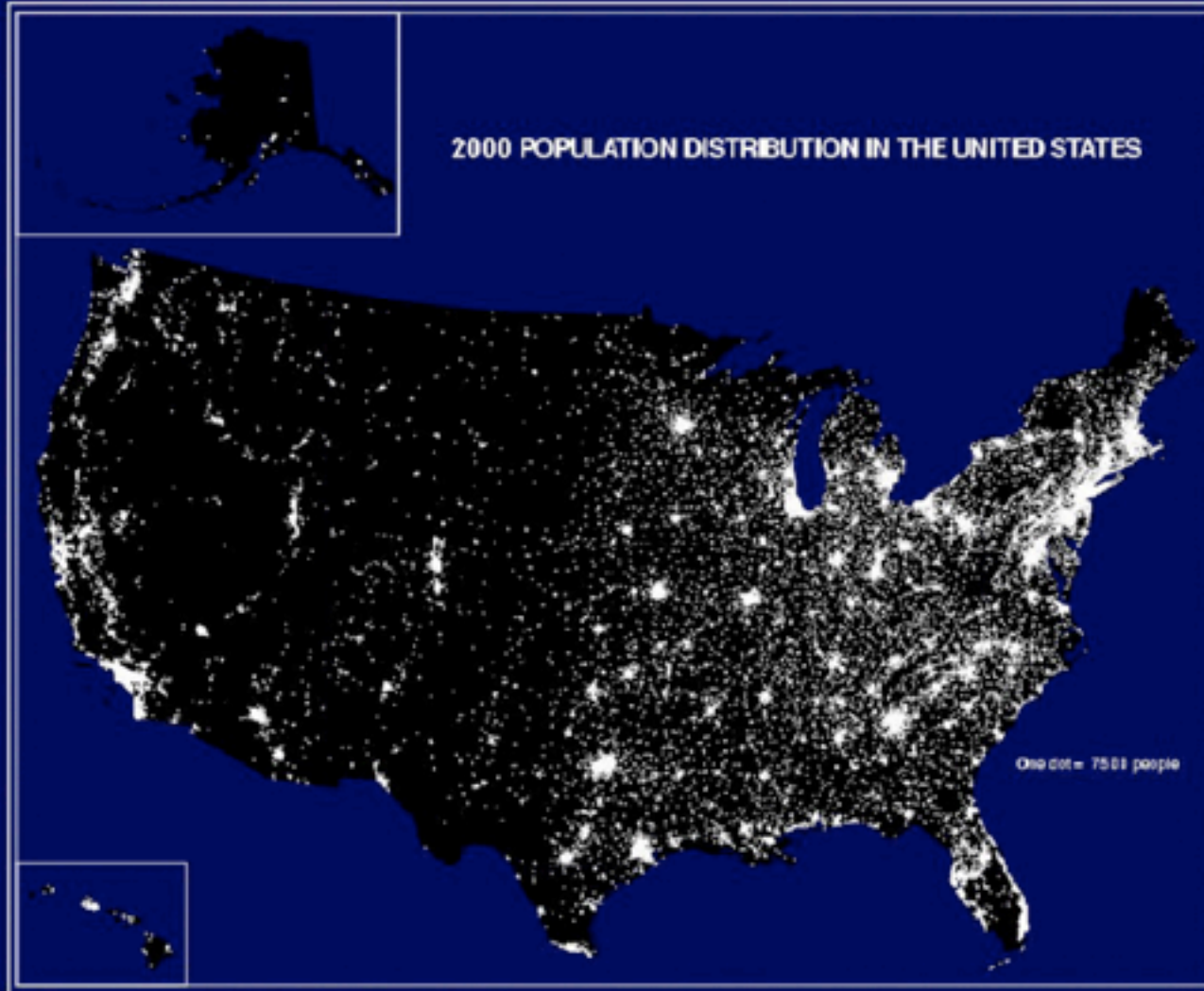
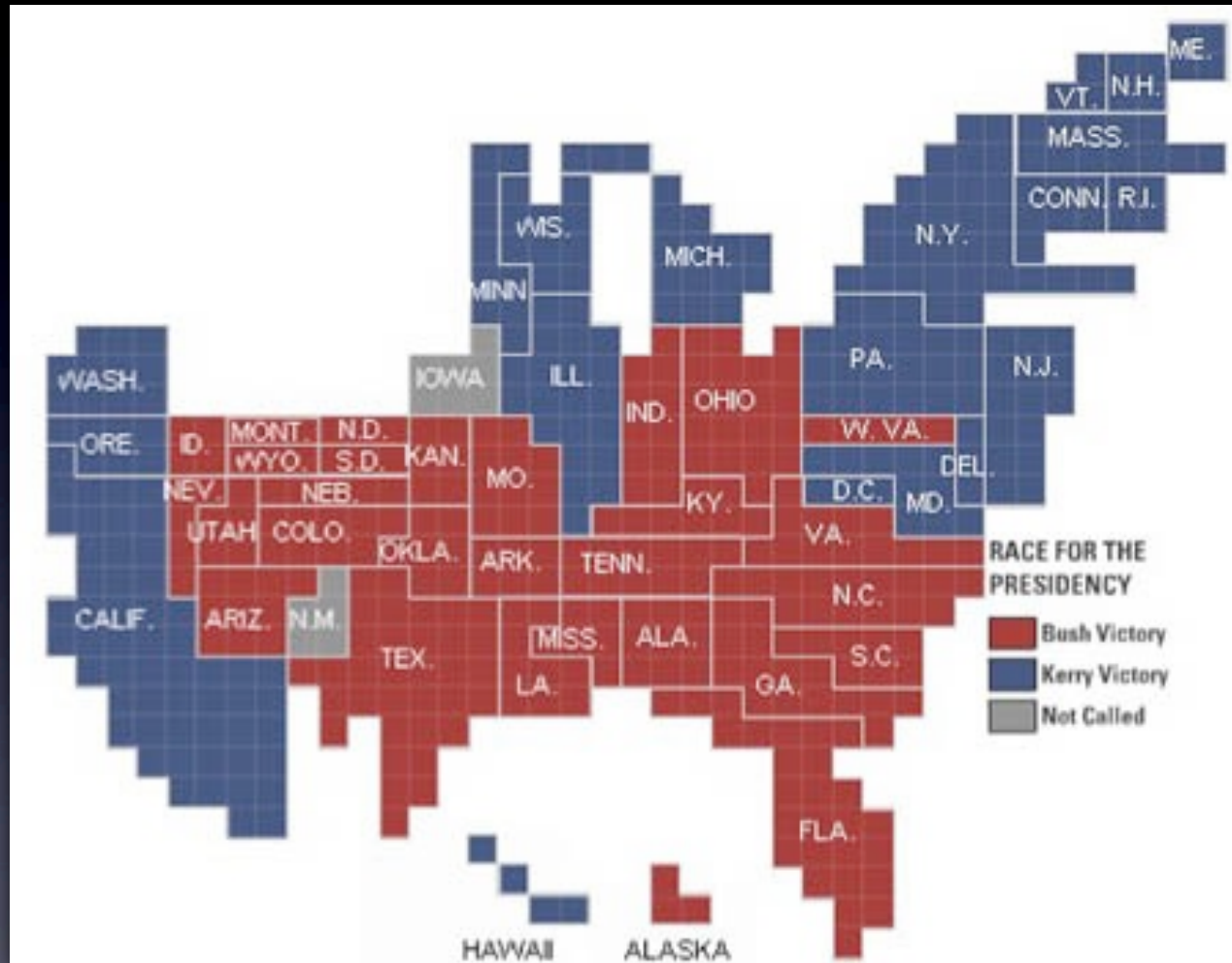
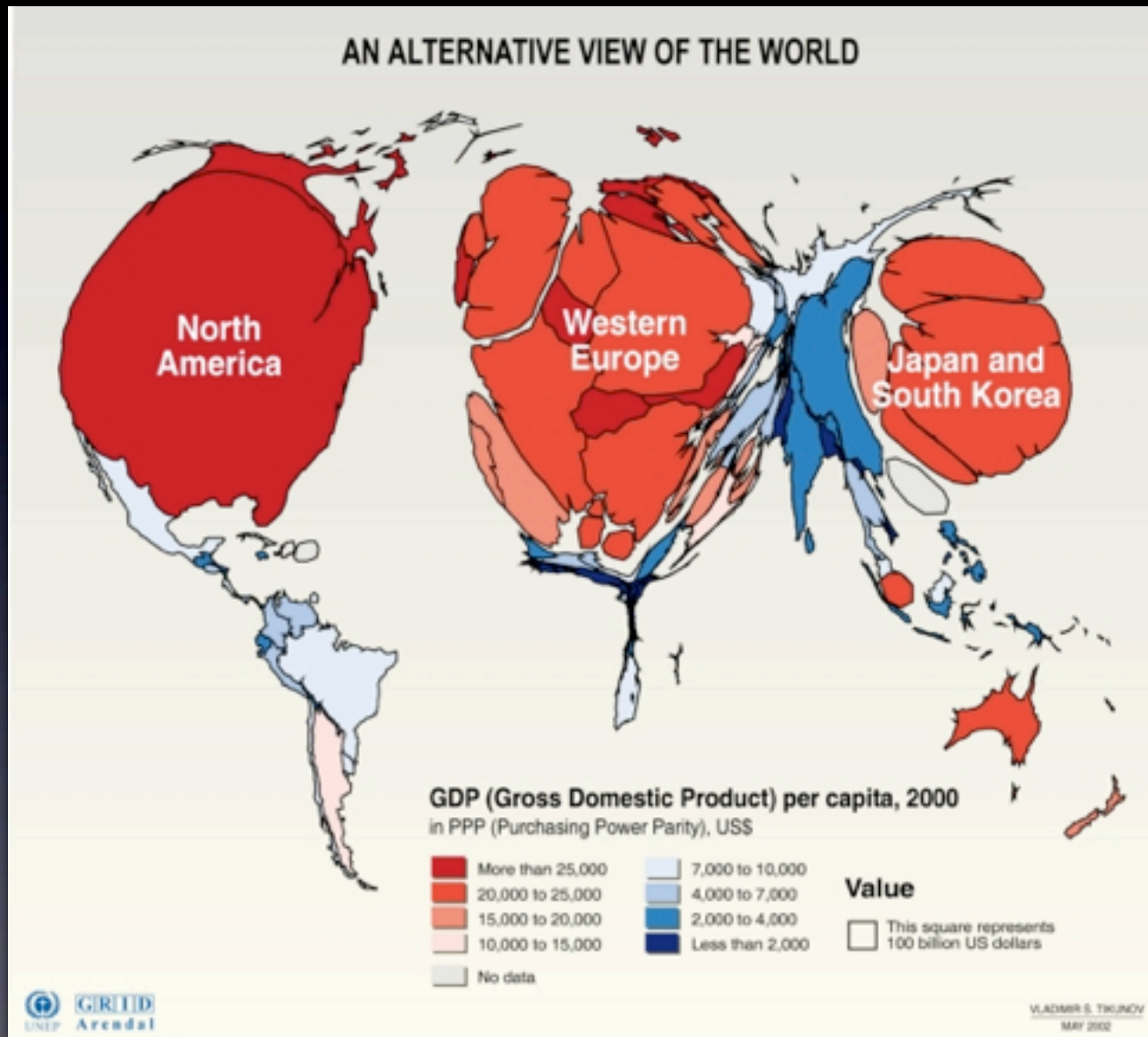


Figure 10.10 Geography Division U.S. Department of Commerce Bureau of Economic Analysis and Data Administration U.S. Census Bureau

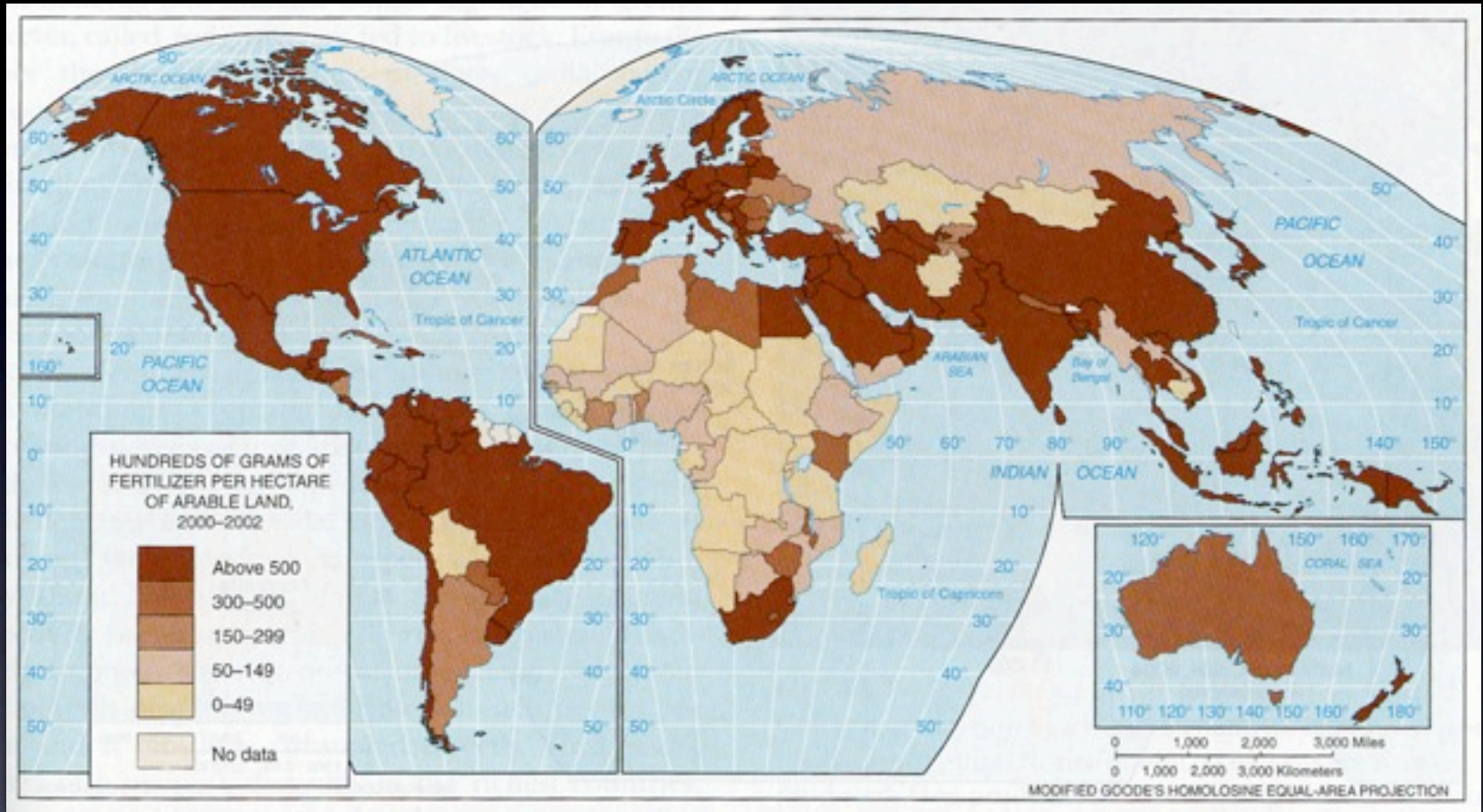
Continuous Cartogram (geometric)



Continuous Cartogram



Choropleth

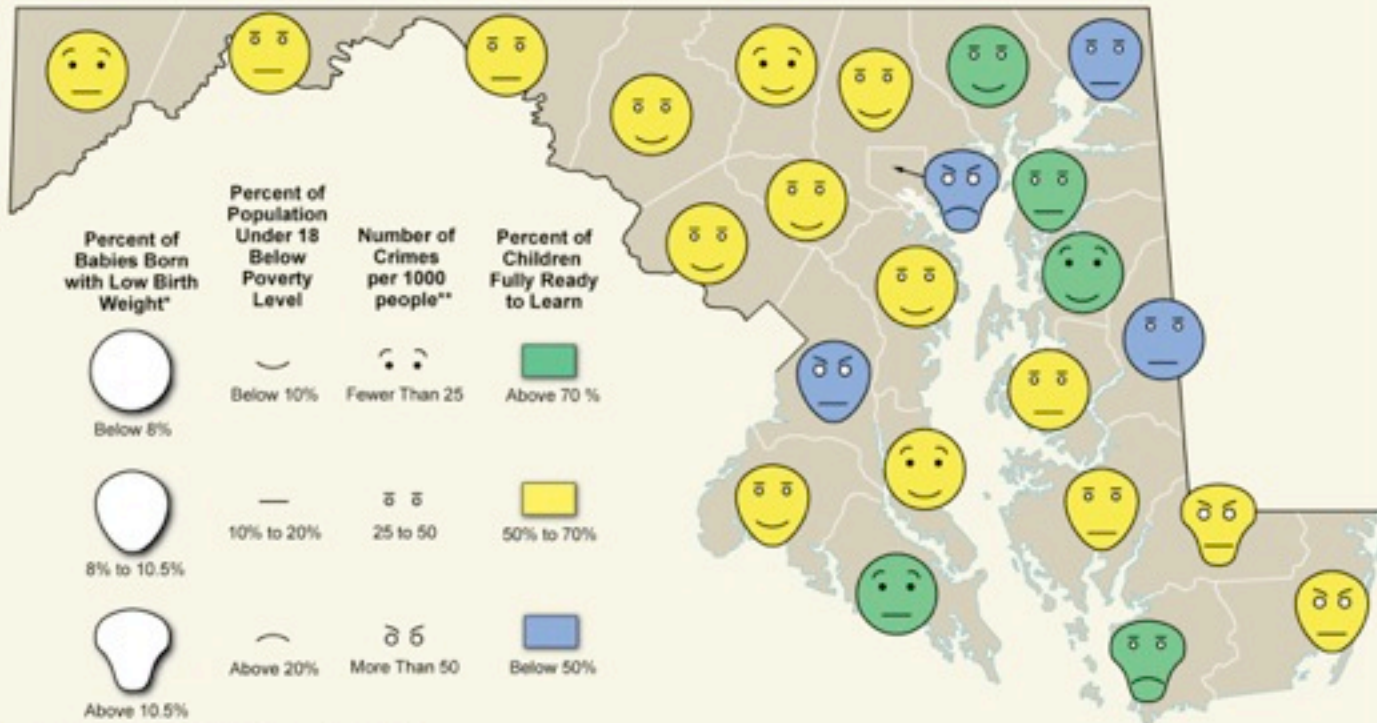


Line Graph Map (shows change over time)



Multi-Variable

School Readiness and Selected Social Environmental Factors



*Low Birth Weight is defined as being born below 2,499 grams

**Number of crimes includes only violent and property crimes. (Aggravated Assault, Arson, Burglary, Forcible Rape, Larceny, Motor Vehicle Theft, Murder, and Robbery)

Sources:

Children Fully Ready to Learn - Maryland State Department of Education, School Readiness Information, 2004 - 2005

Population Below Poverty Level - Maryland Department of Human Resources, Snap Shot 2003, from US Census 2000 data

Babies with Low Birth Weight - Maryland Department of Health and Mental Hygiene, Maryland Vital Statistics, Table 21A, 1999

Number of Crimes Reported per 1000 People - University of Virginia Library, Geospatial and Statistical Data Center from US Department of Justice, FBI Uniform Crime Reports 2002