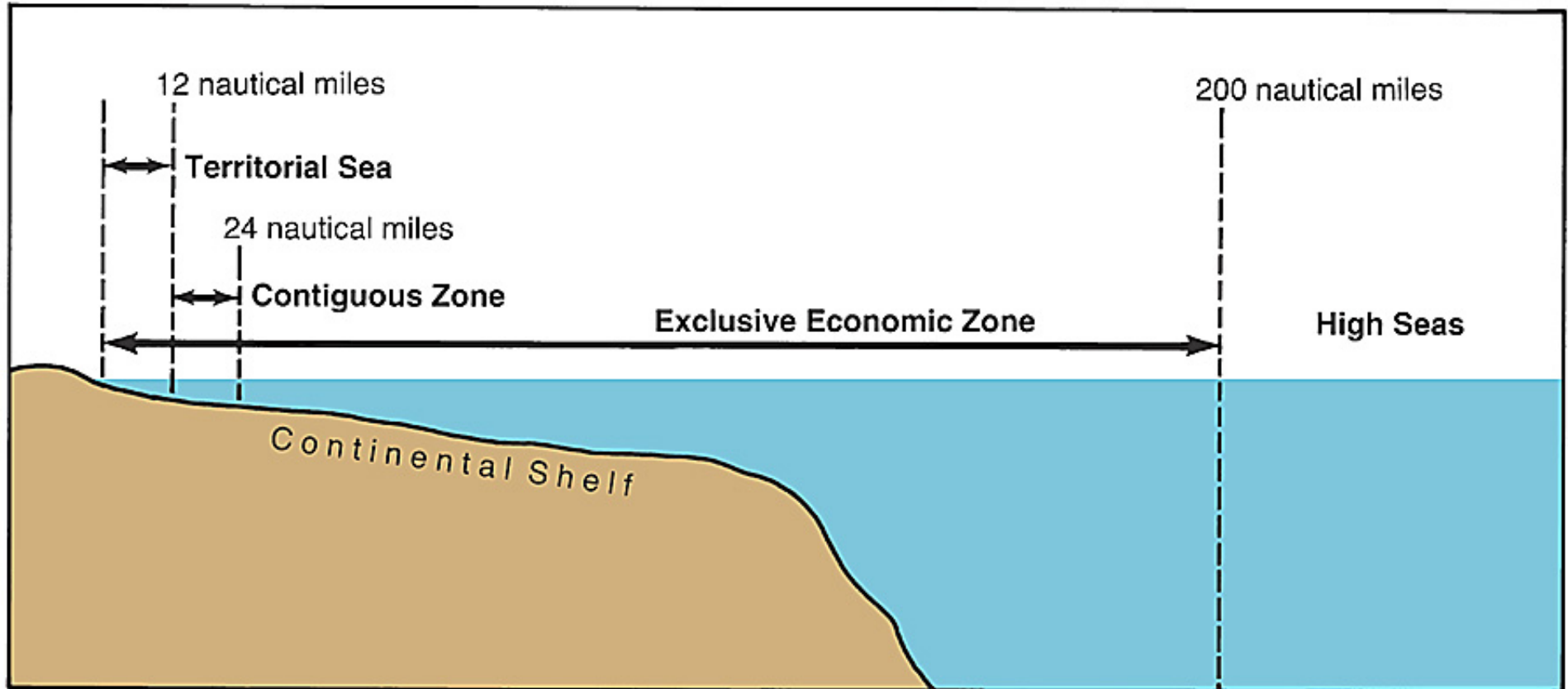
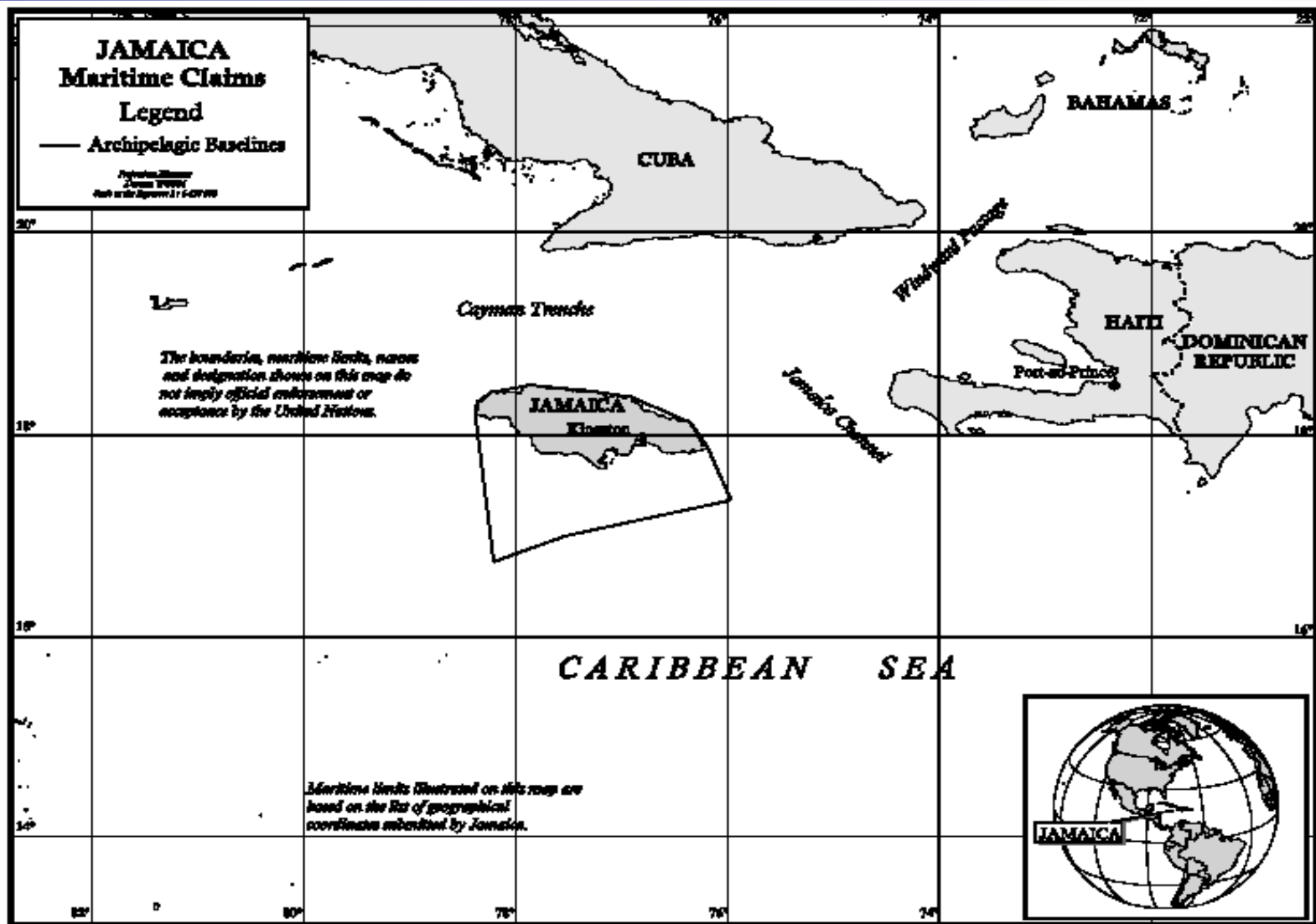


Key Issue 2 - Where are boundaries drawn?

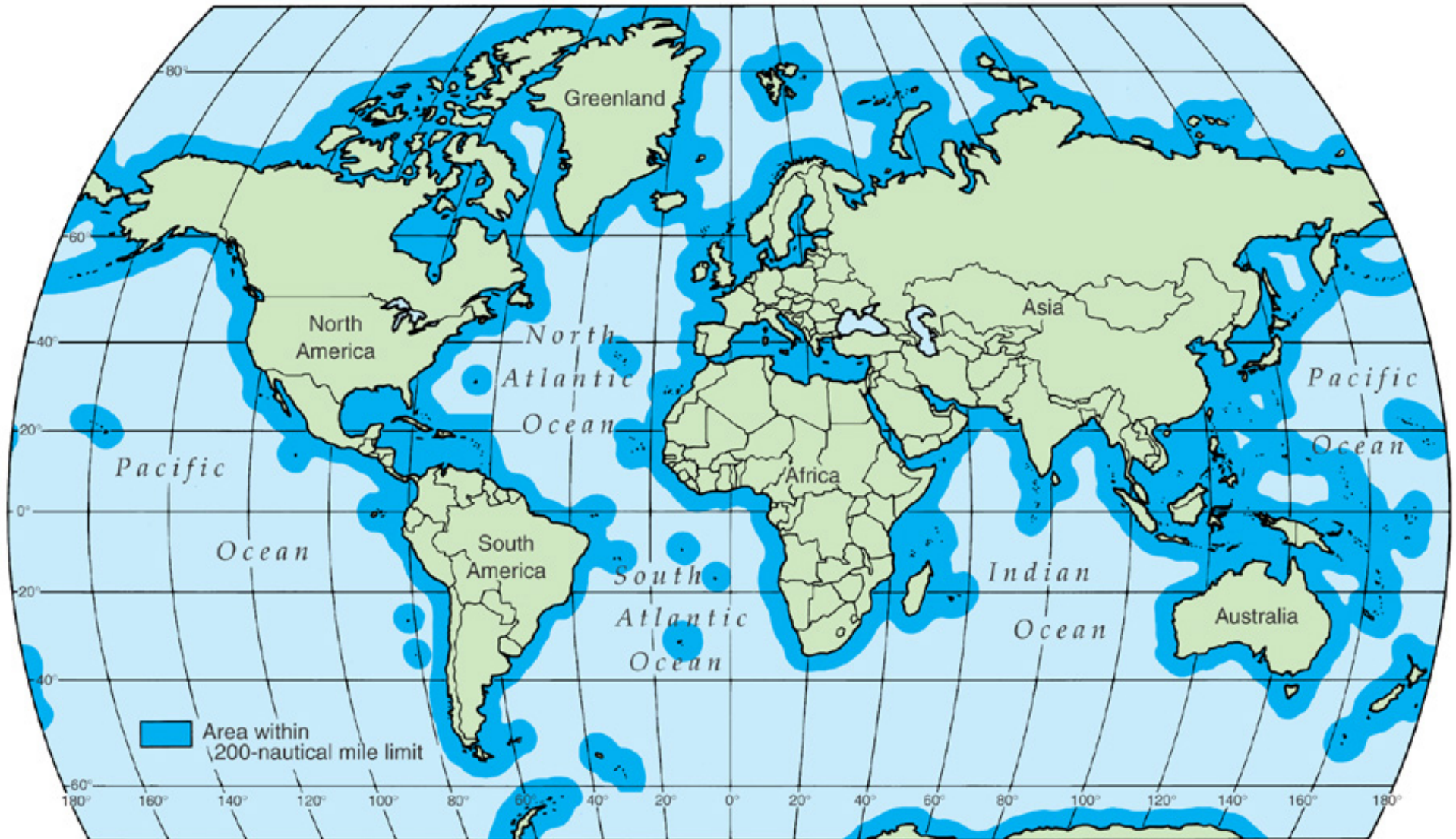
- Boundary- invisible marking the extent of a states territory
 - 2 types-
 - Physical- Mountains, Deserts, water
 - All strategically important
 - Oceans are problem because the extent that country owns; 1983- established ruling 12 nautical miles out from land and fishing rights 200 miles
 - Cultural Boundaries- Geometric- mathematical lines drawn on a map
 - Religious, Language (often found in Europe)
 - Implemented lines- UN nations- Green Line in Cyprus
 - Relic Boundaries- Hadrian's wall and the Great Wall

Territorial Claims





200-Nautical Mile Exclusive Economic Zone



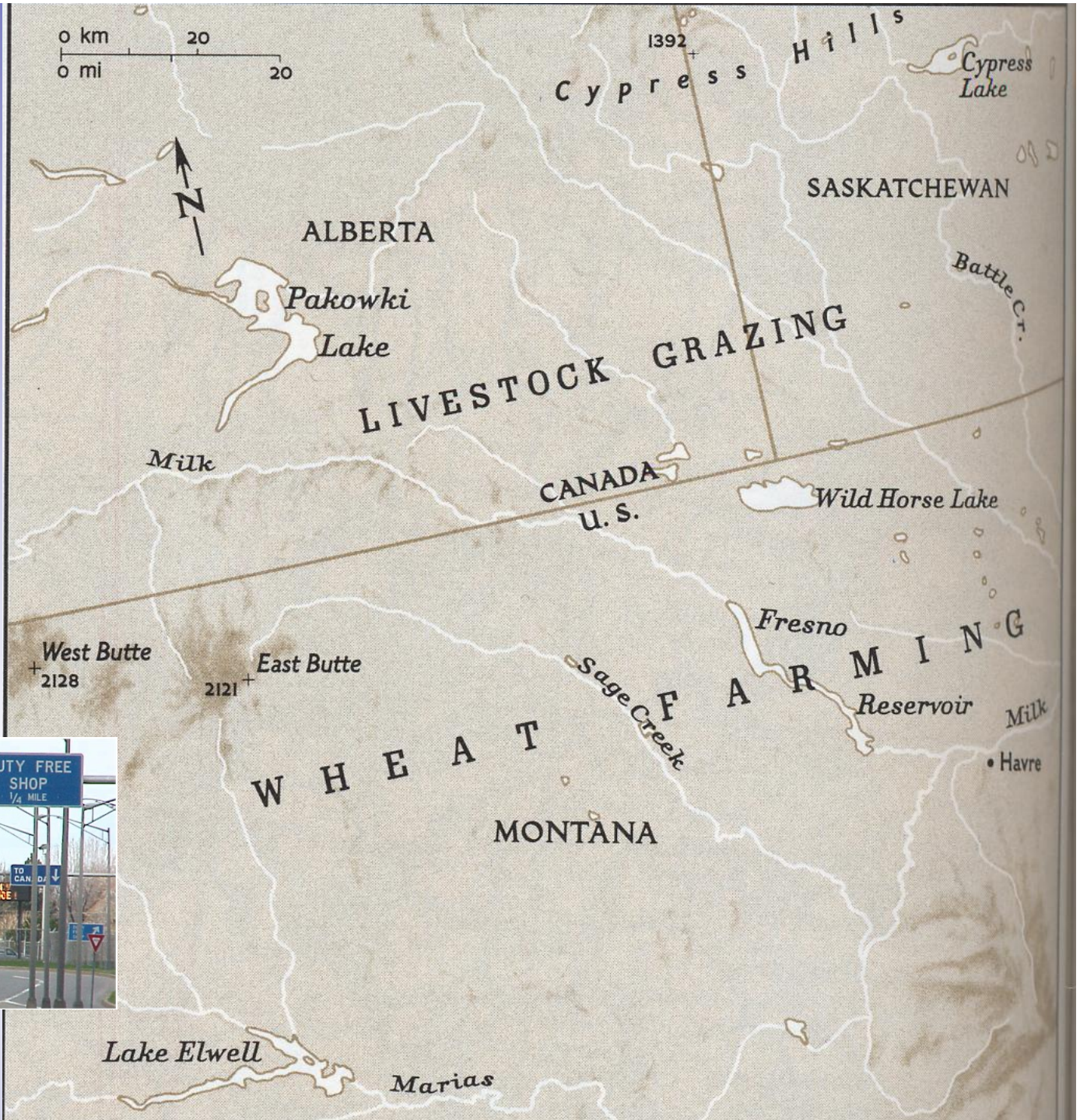


© 2010 Pearson Education, Inc.

Mountains as a Physical Boundary

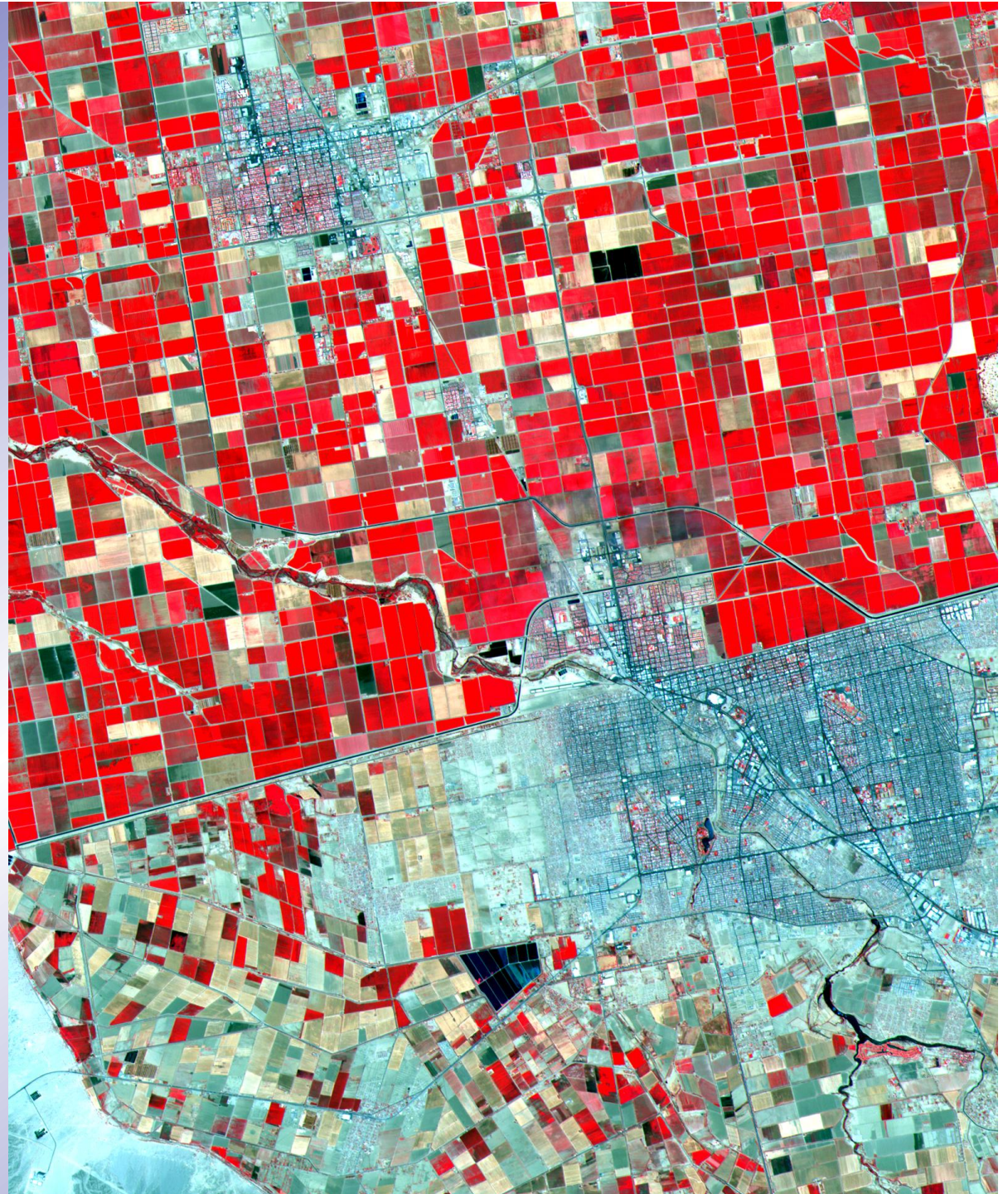
U.S.- Canada boundary

Alberta- Montana



U.S.- Mexico boundary

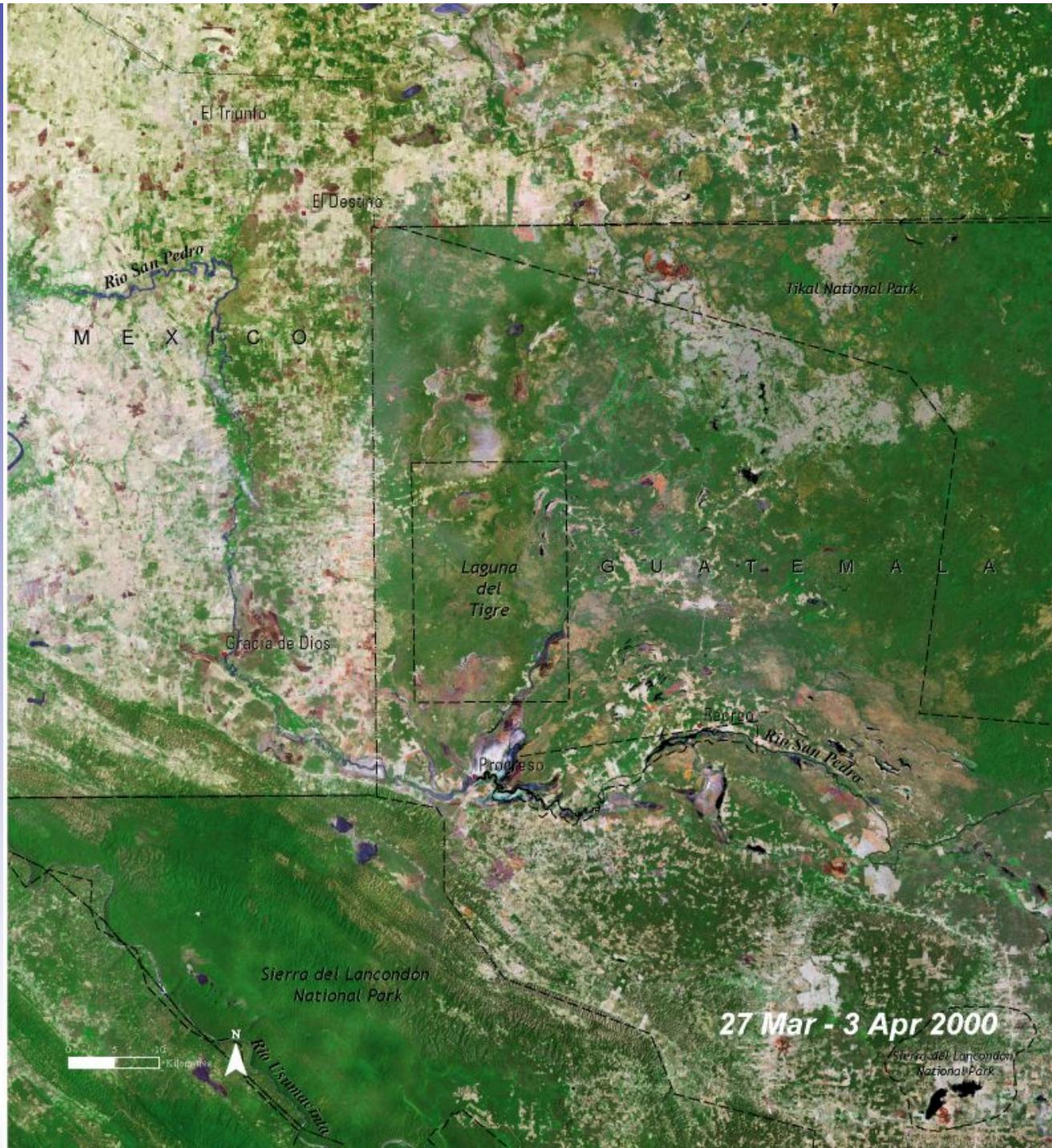
Calexico, California-
Mexicali, Mexico





Iguazu Falls, Argentina / Paraguay

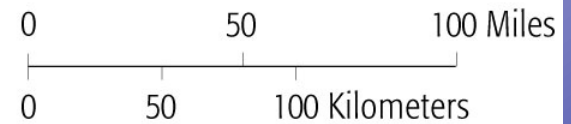




Mexico- Guatemala Border Region



Water as a Physical Boundary



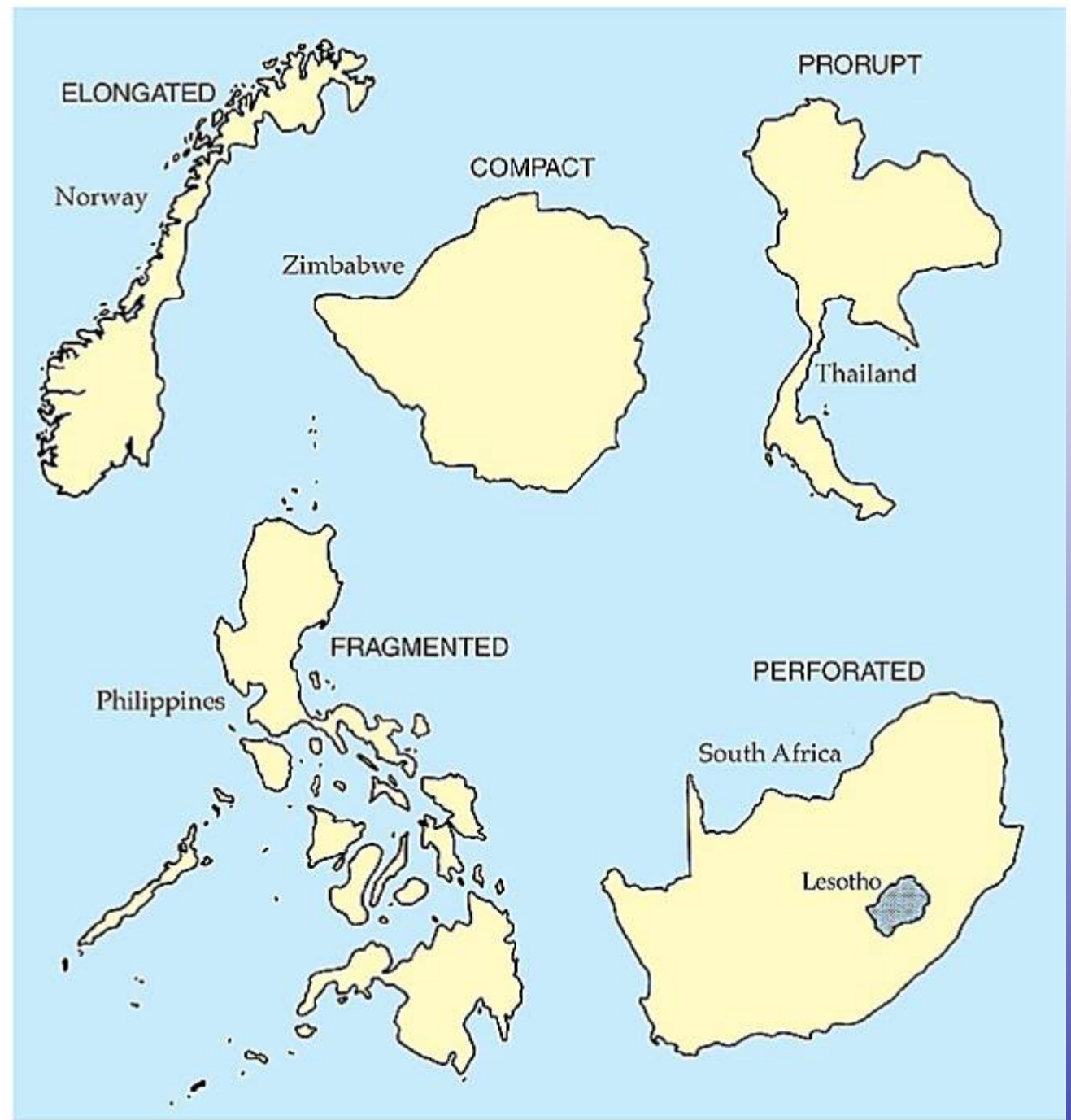
Boundary Types

- Antecedent Boundary- Developed early- before the Cultural landscape
- Subsequent- After the cultural landscape-
- Consequent- Accommodate existing social boundaries- Language, religion, etc..
- Superimposed- Colonial or Imperialized boundaries
 - Leads to problems- Africa
 - Irredentism-group in a country seeks to reunite within another country
 - Somalia and Ethiopia- Albania and the Serbs (kosovo)

Territorial Morphology- Relationship of a territories shape and its internal and external issues

- This leads to five shapes of states-
 - Compact States- distance from the center to the boundary is short
 - Prorupted State- Compact state with large projecting extensions, ex Congo
 - Elongated- Long and narrow- ex. Chili
 - Fragmented- Several discontinued pieces- Ex U.S.
 - Perforated State- Completely surrounds another state- ex South Africa

Shapes of States



Compact





UGANDA

KENYA

RWANDA

BURUNDI

Lake
Victoria

Compact States

Fragmented



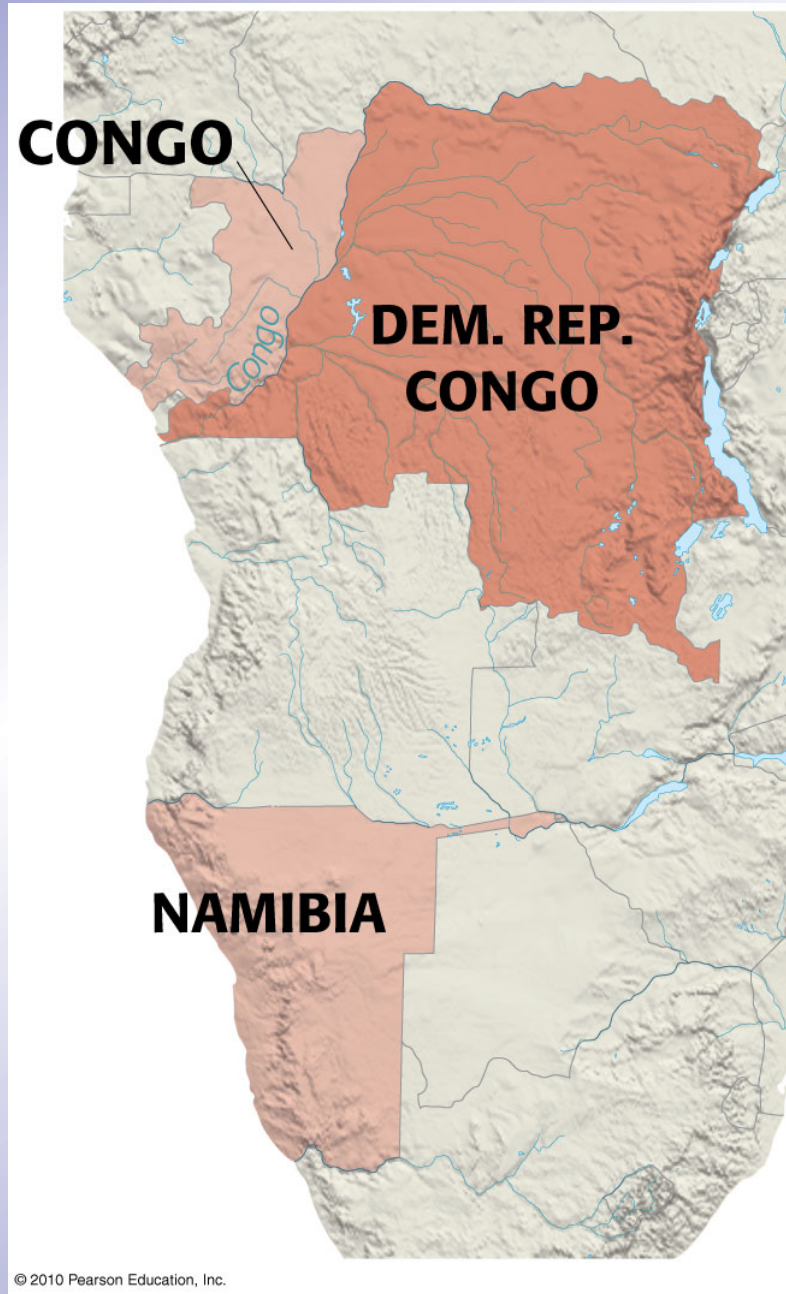
A Fragmented State



Prorupted



Prorupted States



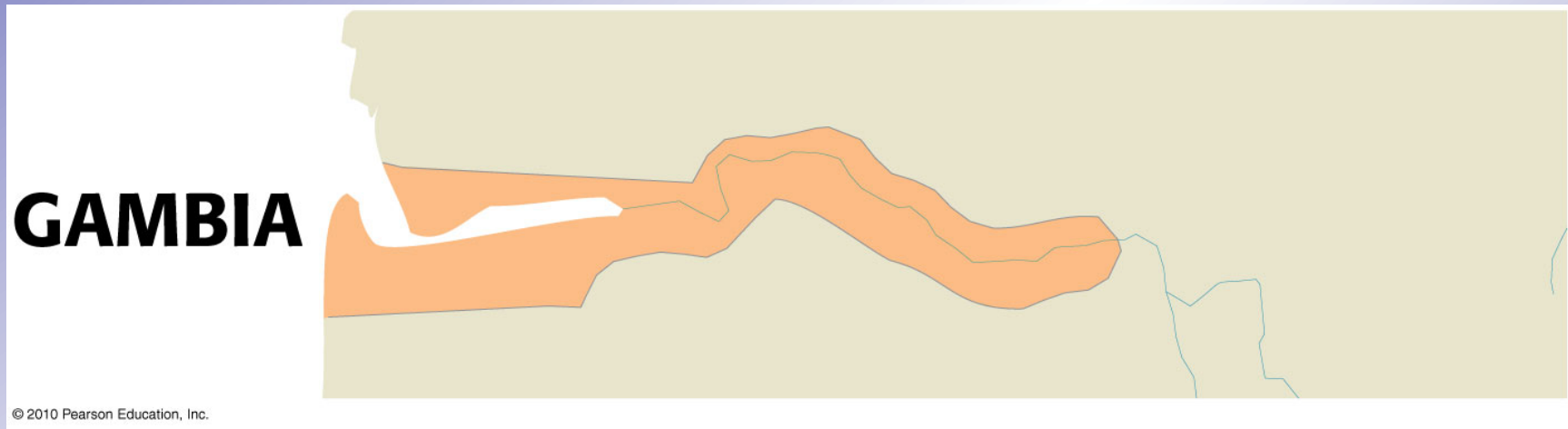
Perforated State





A Perforated State

An Elongated State



Elongated

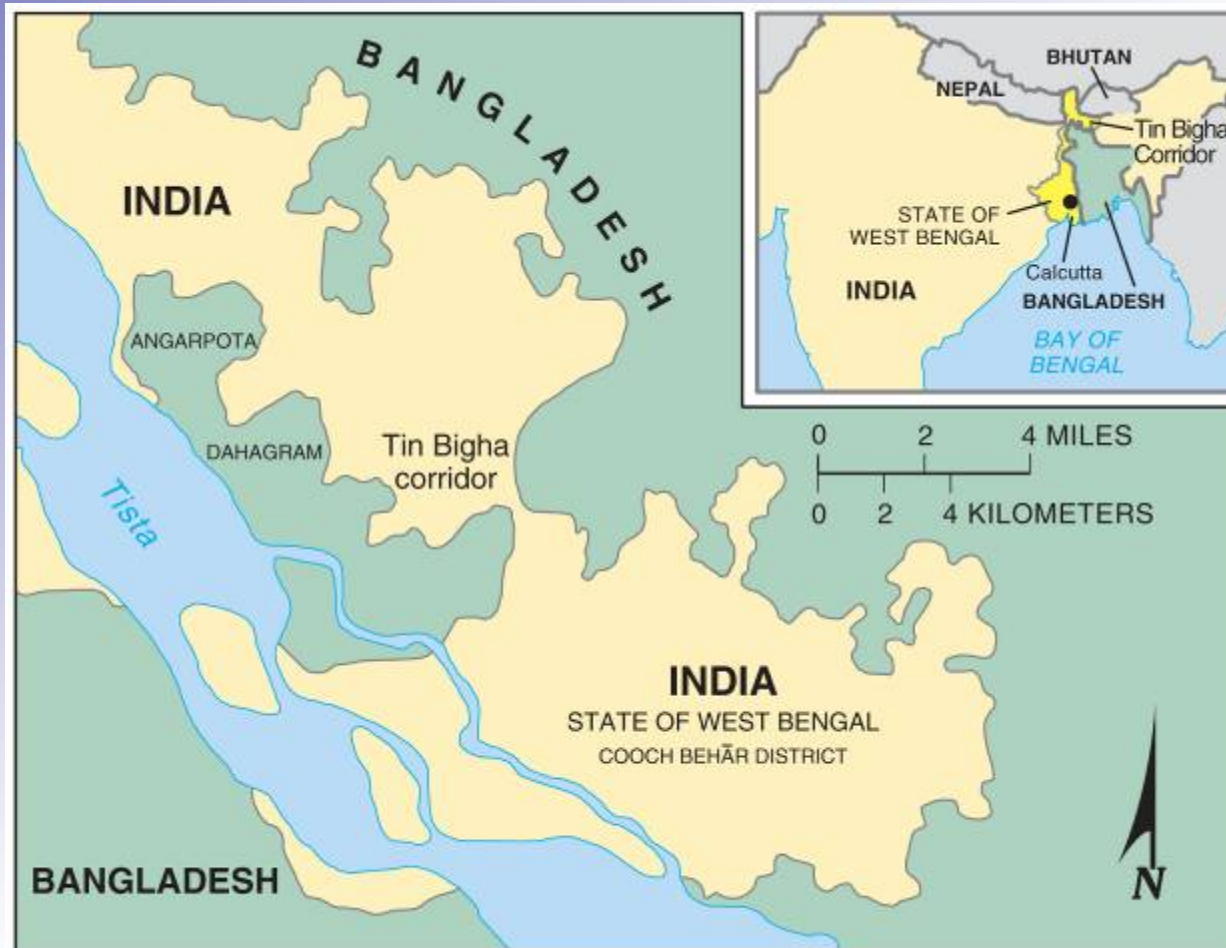


- Other types

- Landlocked- no direct outlet to the ocean- ex most of Africa
- Frontier- zone where state exercises complete control
- Unitary State- most of the power is in the hands of the central government
- Federal State- allocates large power to units in local govt within the country
- Confederate- power is located in the local units

- The trend recently is allocates more power to the central government then to the independent territories

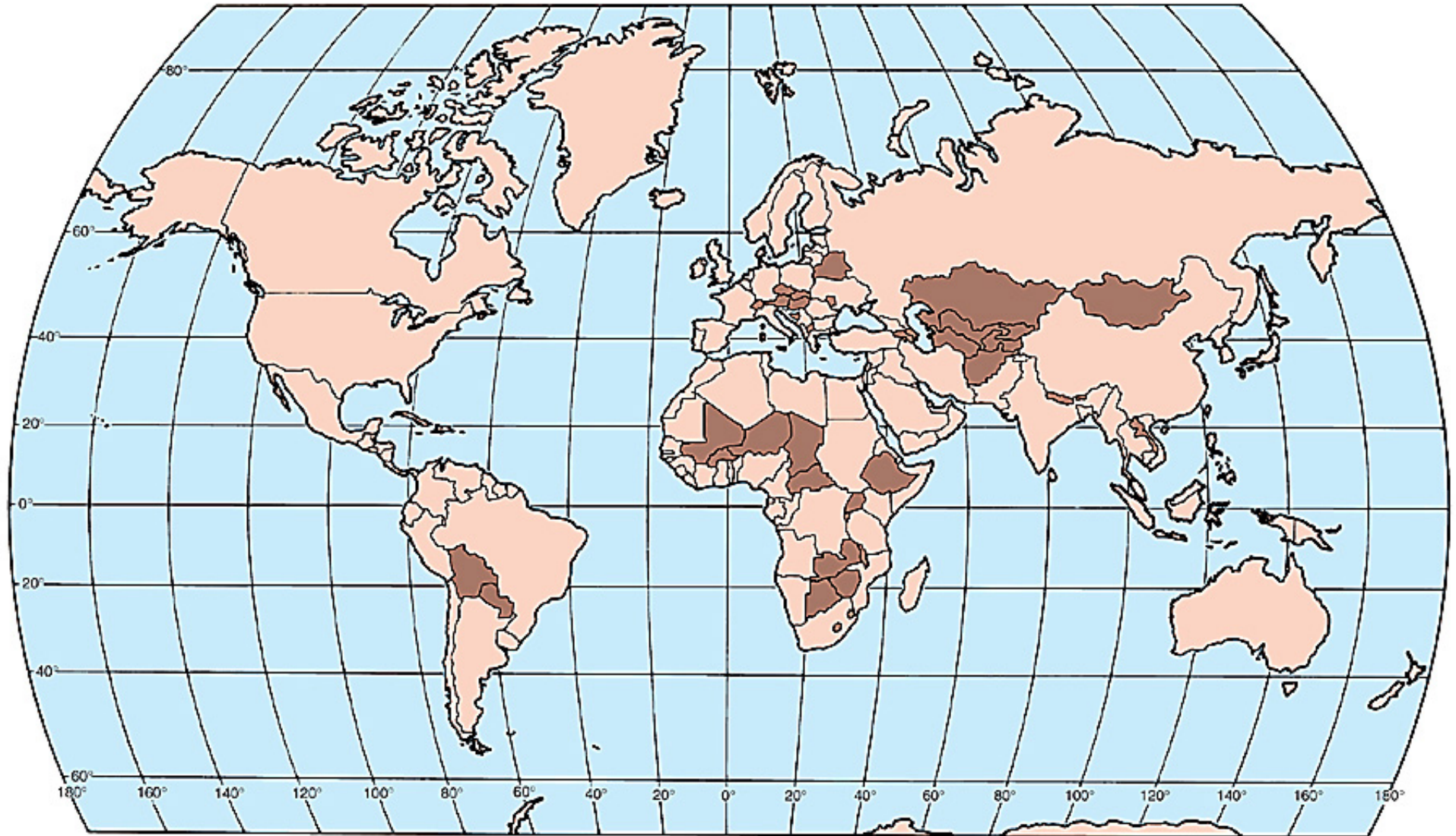
India: The Tin Bigha Corridor



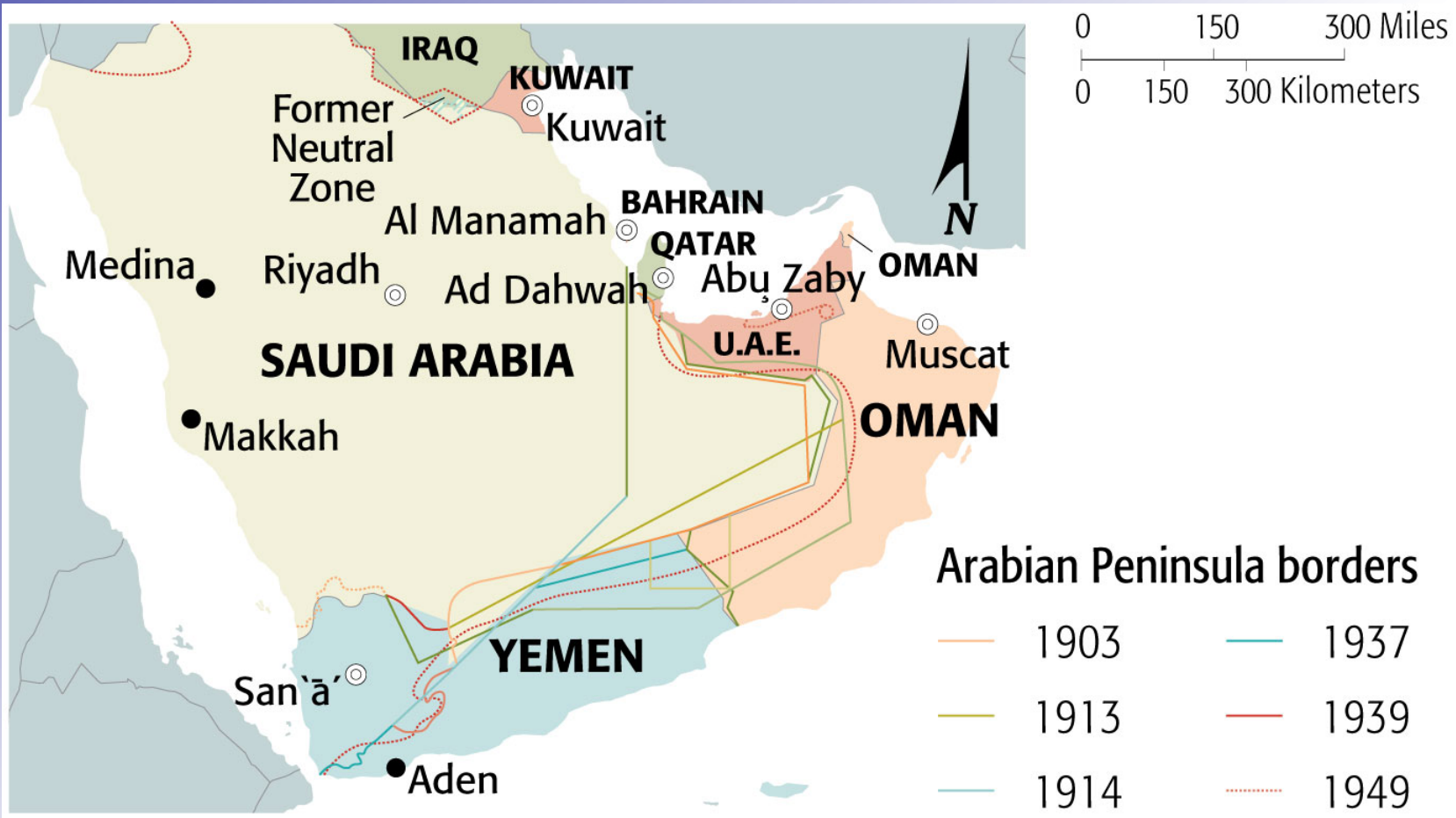
Copyright © 2008 Pearson Prentice Hall, Inc.

The Tin Bigha corridor fragmented two sections of the country of Bangladesh. When it was leased to Bangladesh, a section of India was fragmented.

Landlocked States

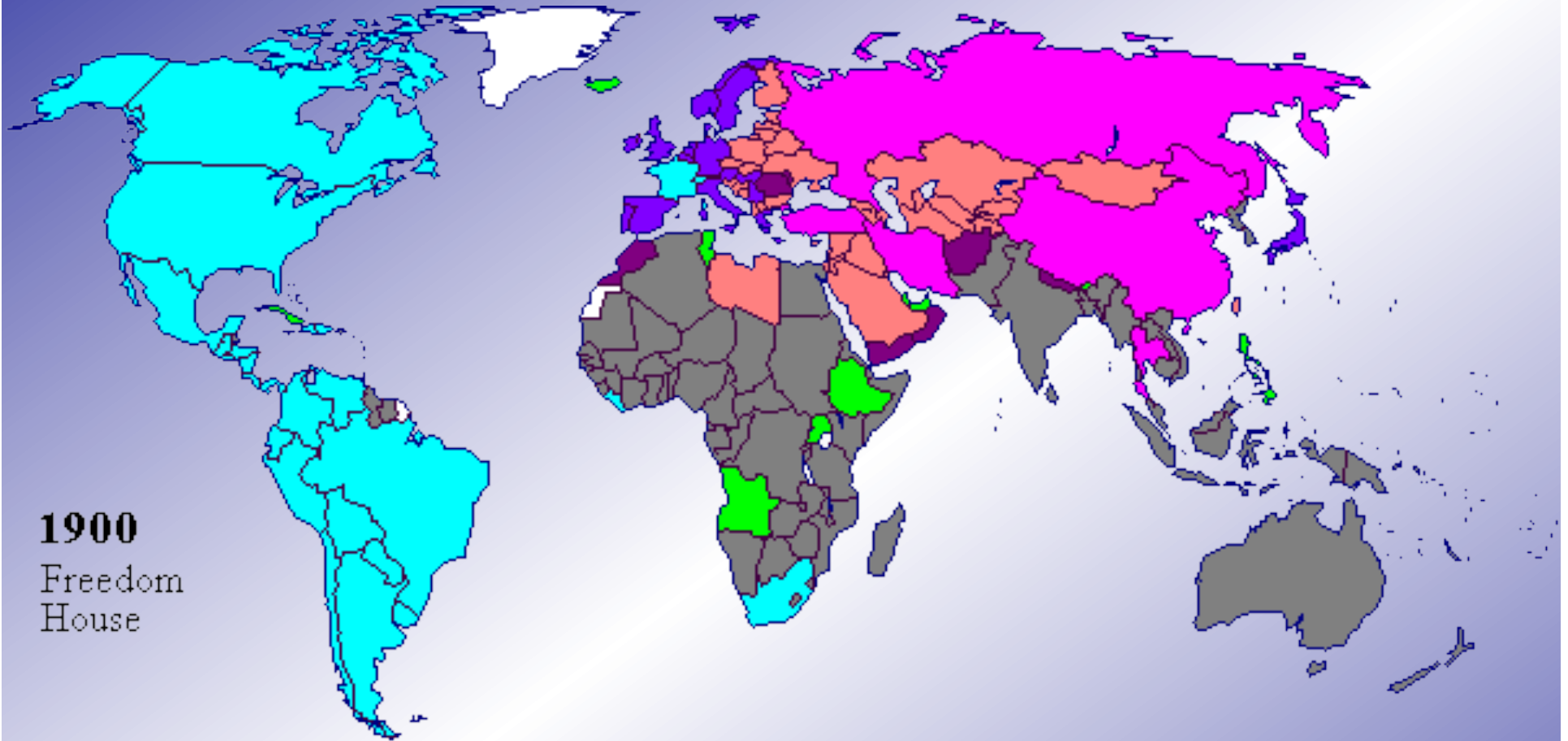


Frontiers in the Arabian Peninsula



Several states in the Arabian Peninsula are separated by frontiers rather than precise boundaries

Forms of Government



1900
Freedom
House

Monarchies:

Constitutional Monarchy

Traditional Monarchy

Absolute Monarchy

Republics:

Democracy

Restricted Democratic Practice

Authoritarian Regime

Totalitarian Regime

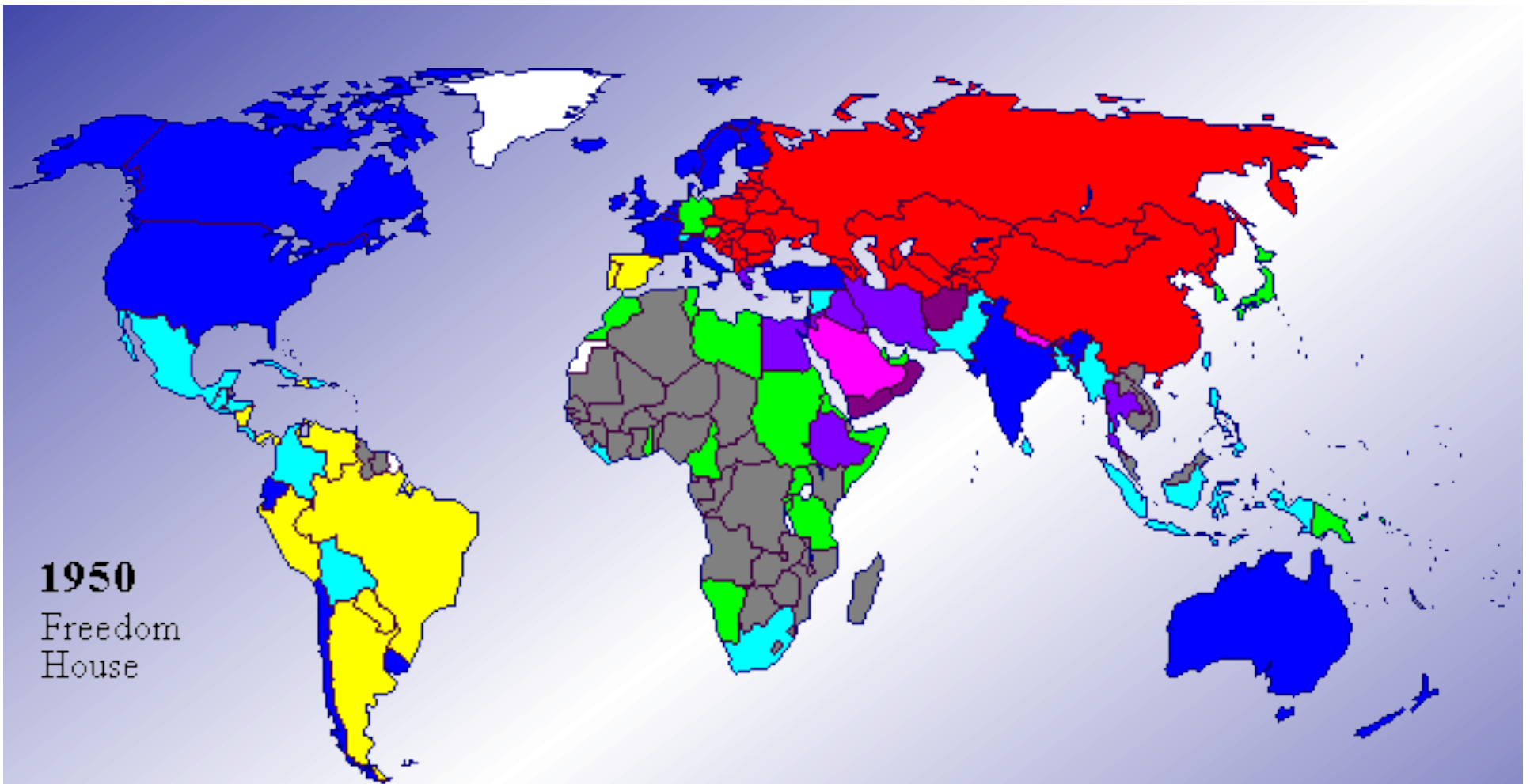
Non-Sovereign:

Protectorate

Colonial Dependency

Empire

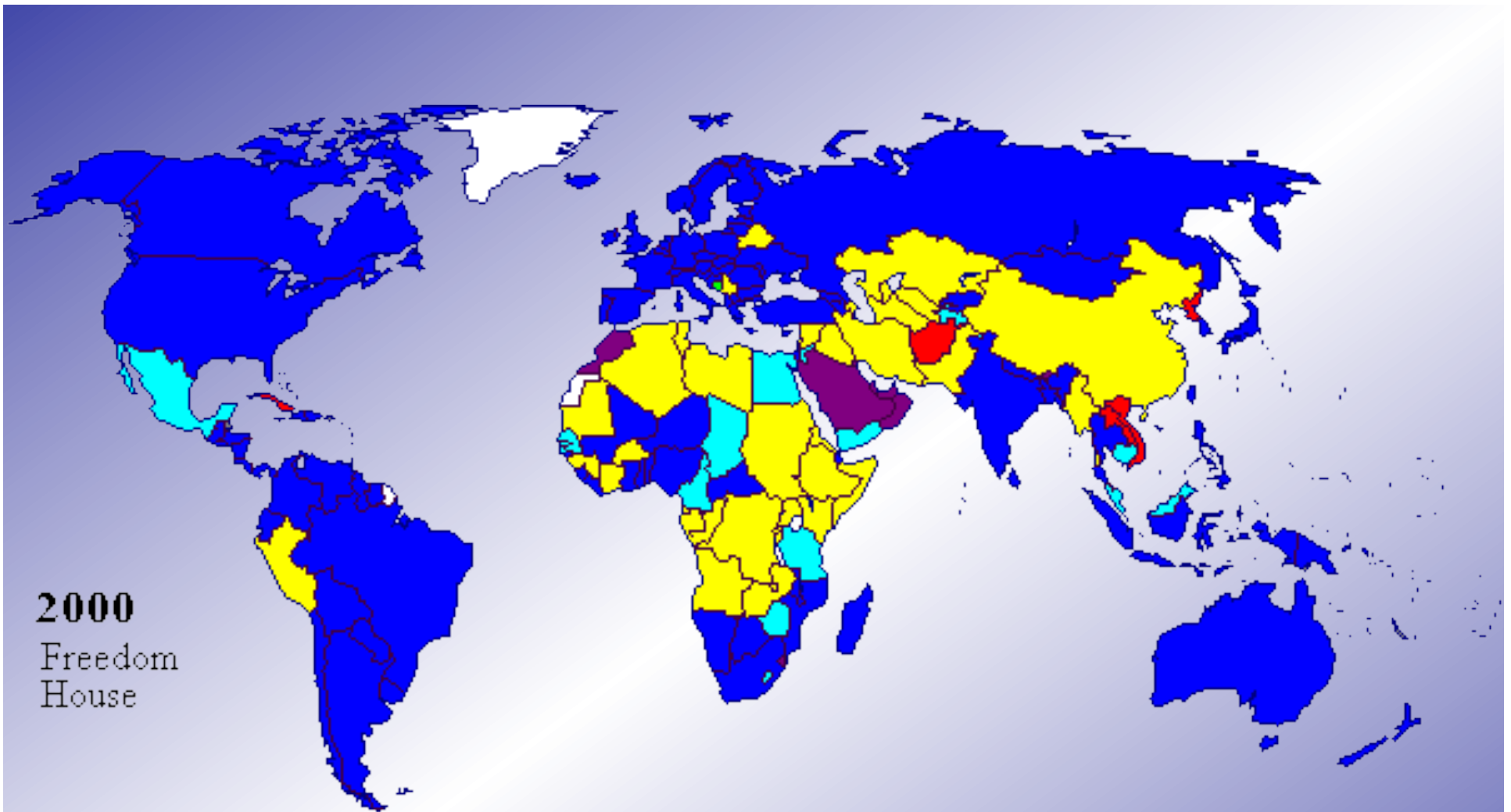
Source: Matthew White, 2003. <http://users.erols.com/mwhite28/othergov.htm> Adapted from FreedomHouse.org



1950
Freedom
House

<i>Monarchies:</i>	Constitutional Monarchy	Traditional Monarchy	Absolute Monarchy
<i>Republics:</i>	Democracy	Restricted Democratic Practice	Authoritarian Regime
			Totalitarian Regime
<i>Non-Sovereign:</i>	Protectorate	Colonial Dependency	Empire

Source: Matthew White, 2003. <http://users.erols.com/mwhite28/othergov.htm> Adapted from FreedomHouse.org



2000
Freedom
House

<i>Monarchies:</i>	Constitutional Monarchy	Traditional Monarchy	Absolute Monarchy
<i>Republics:</i>	Democracy	Restricted Democratic Practice	Authoritarian Regime
			Totalitarian Regime
<i>Non-Sovereign:</i>	Protectorate	Colonial Dependency	Empire

Source: Matthew White, 2003. <http://users.erols.com/mwhite28/othergov.htm> Adapted from FreedomHouse.org

Centripetal Forces

- Nationalism
- Unifying Institutions
- Organization & Administration
- Transportation & Communication

